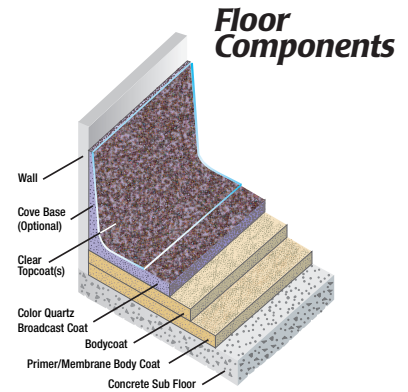


# PalmaLite Colored Quartz Epoxy Flooring

## PaliKrom 185



### All Purpose Multi-Color Heavy-Duty Flooring System

Formulated specifically for institutional, commercial and industrial usage, PalmaLite PaliKrom 185 (nominal 3/16") is Palma's colored quartz epoxy flooring system for use over concrete, plywood, existing ceramic, quarry tile and terrazzo floors, or where added thickness is required to remediate concrete deficiencies. Used in a wide range of industrial environments, it is ideal for manufacturing, pharmaceutical processing, food and chemical processing, animal areas, or where the existing concrete is not uniform. PaliKrom 185's rich colored quartz, decorative surface creates a "tweed look" that comes in 12 designer colors to match almost any architectural motif. The textured surface is slip-resistant, meeting all ADA and ASTM requirements.

### Certified Waterproof by Independent Laboratory

All PalmaLite epoxy flooring systems are certified to be waterproof eliminating the need for an added waterproof membrane.

This results in a cost-saving of 20 to 30 percent over competitive products that recommend separate membranes for waterproofing.

### Costs up to 30% less

A new PaliKrom 185 floor provides years of dependable service while outlasting concrete 3 to 1. A 1/4" epoxy floor is generally not needed, accounting for a potential savings of 30 percent.

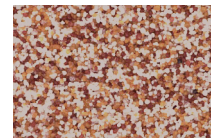
### No Seams to Trap Dirt or Bacteria

PaliKrom 185 cleans up easily. Its uniform, non-porous surface is free of seams, trowel marks, and depressions. PaliKrom 185 will not support bacterial and fungal growth, making it an ideal floor for "clean environments".

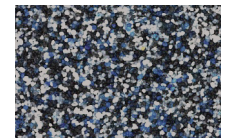
### Meets Most LEEDS and VOC Requirements

PaliKrom 185 is certified to meet strict VOC requirements for your next "Green" project. Independent laboratory testing results are available.

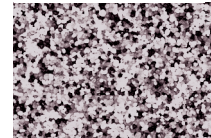
### Standard Blends



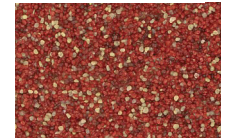
Cinnabar



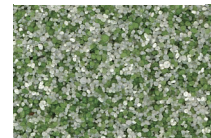
Denim



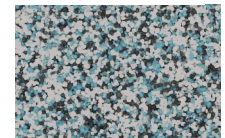
Graphite



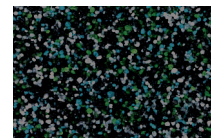
Quarry



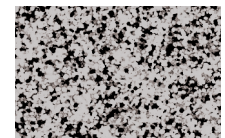
Green



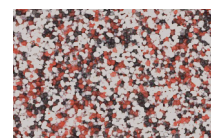
Jade



Marine



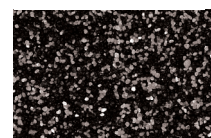
Pewter



Aztec



Adobe



Onyx



Goldmist

This color chart is a guide only. Final selection should be made from an actual sample.



**Palma Inc.**  
Flooring You Can Stand On  
Since 1927  
[www.palmainc.com](http://www.palmainc.com)

## Product Data

### Product Name

**PalmaLite PaliKrom 185**  
Seamless Colored Quartz Epoxy Flooring

### Formulator

**Palma Inc.**  
P.O. Box 2539  
14 Salter Place  
Bloomfield, New Jersey 07003  
Phone: 800.336.7256  
Fax: 973.429.2149  
Website: www.palmainc.com

### Product Description

**a. Basic Uses:** PalmaLite PaliKrom 185 is a combination trowel-broadcast self-leveling, decorative and functional flooring system applied at a nominal 185 mils (3/16") for use over properly prepared new, dry, existing, spalled concrete; and over existing ceramic tile, quarry tile, terrazzo, and plywood. It is ideally used in commercial, industrial, and institutional facilities for light to heavy traffic, and in areas where aggressive atmospheres exist. Exhibiting excellent resistance to abrasion, physical impact, inorganic and organic acids, solvents, alkalies, fungus and bacteria. It's dense non-porous consistency also provides exceptional electrical insulation, waterproofing, low shrinkage and adhesive strength. PaliKrom 185 can be used to form an integral matching cove base and can be applied as a wainscot and wall surface.  
**Cove Base:** Feather-edged at the top to a straight line at specified height. PaliKrom cove base can hide joints from ceramic tile and quarry tile as well as concrete block.  
**Wainscoting/Walls:** Applied over new and/or prepared surfaces at 60 Mil (1/16").  
**b. Composition:** PaliKrom 185 is composed of

100% solids, curing agent, epoxy resin, graded silica quartz aggregates and colored quartz aggregate. Non-toxic, low odor, **PaliKrom 185** meets or exceeds most VOC requirements.  
**c. Finish:** Decorative, bright, variegated, easy to maintain, non-porous, slip-resistant, free of seams, trowel marks and depressions.  
**d. Colors:** Adobe, Aztec, Cinnabar, Denim, Goldmist, Graphite, Green, Jade, Onyx, Marine, Pewter, and Quarry. Custom color blends are available.  
**e. Limitations:** Design concrete for local conditions to prevent osmosis, hydrostatic and vapor pressure in order to eliminate the possibility of sporadic blistering or delamination. Existing slab on grade concrete surfaces may be subject to moisture vapor transmission. Maintain substrate and air temperature between 60° and 85°F with proper ventilation, permanent lighting, or air conditioning during application and curing. Note: Where temperatures on the coated surface exceed 160° degrees F, hot water and/or steam are constant and/or highly corrosive reagents are present, use PalmaLite Novolac 125 or 185.  
**f. Applicable Standards:** Military, ASTM, ACI, USDA, FDA, OSHA, standards or procedures.

### Preparation and Application

**1. General:** New and Existing Surfaces:  
**a.** Prepare substrate in compliance with Committee C.03 ASTM C-811 Standard Practice for Surface Preparation of Concrete for Application of Resinous Monolithic Surfacing and formulator's written instructions for substrate preparation.  
**b.** Surface must be structurally sound, free of contaminants and loose materials.  
**c.** Clean and fill joints and cracks wider than 1/16" with Palma Flex joint filler. Tape over crack or joint with 4" fiberglass mesh.  
**d.** Sawcut or chisel concrete substrate at termination

points, "keying in" to maintain minimum thickness of floor coating.  
**e.** Tape at termination points and adjacent surfaces not to be coated with appropriate tape before each application is applied.  
**f.** Remove tape before each application dries.  
**2. Plywood:**  
**a.** Apply 1/4" to 3/4" interior grade plywood, finish side up. (Contact **Palma Inc.** for specific details).  
**Application:** Nominal 185 Mil (3/16")  
**a.** Trowel primer-membrane-bodycoat onto surface then broadcast silica quartz aggregate into wet epoxy. Allow to dry.  
**b.** Sweep excess aggregate.  
**c.** Trowel bodycoat onto surface then broadcast silica aggregate into wet epoxy. Allow to dry.  
**d.** Sweep excess aggregate.  
**e.** Apply cove base or other vertical surfaces when required.  
**f.** Trowel broadcast coat onto surface then full broadcast colored quartz aggregate into wet surface. Allow to dry.  
**g.** Remove excess quartz, stone and sweep.  
**h. Topcoat(s):** Standard slip-resistant finish: Apply two coats of **PalmaLite Topcoat**. Other top-coating options available, including urethanes.  
**i. Precautions:** Provide adequate ventilation and protection against contact with skin and eyes. Wear protective gloves, goggles, respirator as needed, and shoes. Prohibit smoking and the use of spark or flame devices at all mixing and application areas.

### Availability and Cost

**a.** Throughout the United States, Canada and abroad.  
**b.** Cost varies depending on size, location and preparation.

### Warranty

**a.** Standard: Palma Inc. renders a joint one-year formulator/applicator warranty against faulty workmanship or materials.  
**b.** Extended: Extended guarantees are available, contact Palma Inc. directly.

### Maintenance

**a.** Clean floor daily by sweeping, mopping, (clean mop) or mechanical scrubbing with soft nylon brush as needed. Use clean water and ph neutral detergent at all times. Contact Palma Inc. for detailed information.

### Technical Services

**a.** Contact Palma Inc. for assistance, literature, samples detailed specifications, preparation, application, and maintenance instructions.



**Palma Inc.**

A Palma, Manton, Palma Company  
www.palmainc.com

Flooring You Can Stand On Since 1927

International Testing Laboratories Inc., Newark, N.J. has completed and certified the following test results for PalmaLite Monolithic Flooring based on end use characteristics. Technical Data as follows:

#### TECHNICAL DATA:

Test	Specification	ASTM C-722 Requirement	PalmaLite Result
Compressive Strength	ASTM-C579	6,000 p.s.i.	13,500 p.s.i.
Tensile Strength	ASTM-C307	1,500 p.s.i.	1,790 p.s.i.
Flexural Modulus of Elasticity	ASTM-C580	0.5x10 (6)	7.03 x 10 (6)
Water Absorption	ASTM-C413	1.0% (max)	0.37% (NIL)
Thermal Coefficient of Expansion	ASTM-C531	40x10 (-6) in./in. Deg F	1.9x10 (-5) in./in. Deg F

#### SUPPLEMENTAL TESTS:

Test	Specification	Requirement	PalmaLite Result
Coefficient of Static Friction	ASTM-C1028	0.5	0.89 Average, wet or dry
Flammability	ASTM-D635	Self-extinguishing	Self-extinguishing
Thermal Shock 5 cycles	ASTM-C884	No cracking, crazing, warping.	No cracking, crazing, warping.
Indentation (concrete)	MIL -D3134	Not more than 7%	Not more than 5% Not less than 1%
Resistance to Impact (concrete)	MIL -D3134	Not more than 1/16" (62.5 Mil)	Maximum 10 Mil
Waterproofness Test	ASTM-D4068	No evidence of moisture	No evidence of moisture
Pittsburgh Toxicity Test *	RS 5-5	Non-toxic	Non-toxic
Bond Strength **	ACI -503	175 p.s.i. (100% concrete failure)	535 p.s.i. (100% concrete failure)

#### INFORMATIONAL TESTS:

Test	Specification	Requirement	PalmaLite Result
Flexural Strength & Rupture	ASTM-C580	Not Cited	5,030 p.s.i.
Taber Abrasion	ASTM-D1044	Not Cited	0.05 grams loss in weight
Shore "D" Hardness	ASTM-D2240	Not Cited	83 Average
Heat Resistance, Standard Topcoat	ASTM-C884	Not Cited	140°F Continuous, 200°F Non-Continuous
Heat Resistance Novolac Topcoat	ASTM-C884	Not Cited	350°F Continuous

\* SGS U.S. Testing Inc., Fairfield, N.J.

\*\* Law Engineering, Houston, TX.