

# Novolac 125

Heat & Corrosion Resistant Colored Quartz Epoxy Flooring



## For Aggressive Chemical or High Temperature Environments

Novolac 125 (1/8") is Palma's high temperature colored quartz epoxy flooring system over properly prepared concrete. An ideal floor for kitchens, laboratories, food and chemical processing; it is specifically formulated for areas where highly corrosive chemicals, concentrated sulfuric acid, acetone and methanol are present and high temperatures are frequent. Also where a rich colored quartz look is preferred.

## Certified Waterproof by Independent Laboratory

All PalmaLite epoxy flooring systems are certified to be waterproof which eliminates the need for an independent waterproof membrane. This results in a cost saving of 20 to 30 percent over competitive products that recommend membranes for waterproofing.

## New Colors Same Dependability

A new Novolac 125 floor provides years of dependable service while outlasting

concrete 3 to 1. The nominal 1/8" thickness is ideal where the concrete is new or the existing concrete is in good condition. Using colored quartz aggregate to achieve a "tweed" look, the textured surface is slip-resistant, meeting all ADA and ASTM requirements. Novolac 125's bright, decorative surface comes in 12 new designer blends to compliment almost any architectural motif.

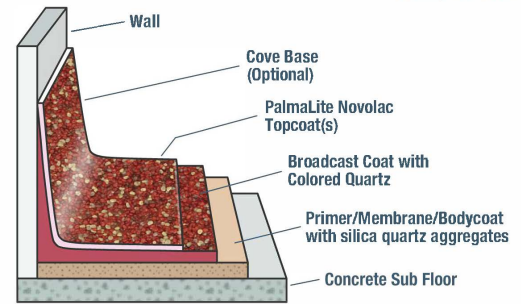
## Meets Most LEEDS and VOC Requirements

PalmaLite Novolac Systems meet many LEED and VOC requirements for your next "Green" project. Independent laboratory testing results are available.

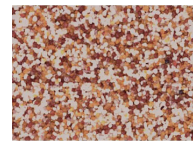
## No Seams to Trap Dirt or Bacteria

The PalmaLite Novolac 125 cleans up easily. Its uniform, non-porous surface is free of seams, trowel marks, and depressions. Novolac 125 epoxy flooring system will not support bacterial and fungal growth.

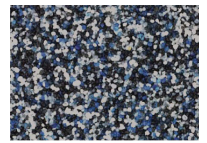
### Floor Components



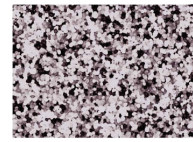
### Standard Blends



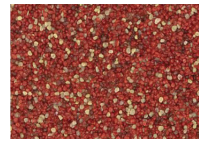
Cinnabar



Denim



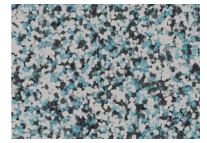
Graphite



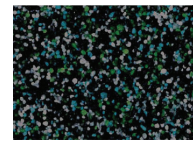
Quarry



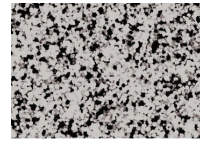
Green



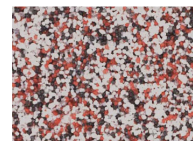
Jade



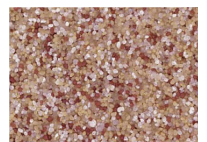
Marine



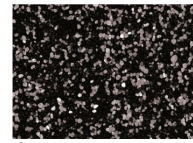
Pewter



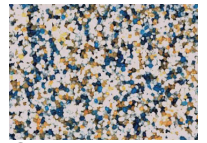
Aztec



Adobe



Onyx



Goldmist

This color chart is a guide only. Final selection should be made from an actual sample

# Novolac 125

## Heat & Corrosion Resistant Colored Quartz Epoxy Flooring

### PRODUCT NAME

**PalmaLite Novolac 125**  
Heat and Corrosion Resistant Colored Quartz  
Epoxy Flooring

### FORMULATOR

**Palma Inc.**  
628 NJ-10  
Suites 2 and 3  
Whippany, NJ 07981  
Phone: 800.336.7256 | Fax: 973.429.2149  
Website: [www.palmainc.com](http://www.palmainc.com)

### PRODUCT DESCRIPTION

**a. Basic Uses:** **PalmaLite Novolac 125** is a combination trowel-broadcast self-leveling, decorative and functional flooring system applied at a nominal 125 mils (1/8") over properly prepared new, or existing, dry concrete. Outwearing concrete by 3 to 1, it is ideally used in commercial, industrial, and institutional facilities. The special properties of **PalmaLite Novolac 125** make it a natural choice for areas where aggressive atmospheres exist; including environments where temperatures on the coated surface exceed 160° F, hot water and/or steam are constant, and reagents such as concentrated sulfuric acid, acetone, and methanol are present. **PalmaLite Novolac 125** resists abrasion, physical impact, inorganic acids, organic acids, solvents, alkalies, fungus and bacteria. A dense non-porous consistency also provides exceptional electrical insulation, waterproofing, low shrinkage and adhesive strength. **PalmaLite Novolac 125** is used to form an

integral matching cove base and can be applied as a wainscot and wall surface.

**Cove Base:** Feather-edged at the top to a straight line at specified height. Novolac cove base can hide joints from ceramic and quarry tile as well as concrete block

**Wainscoting/Walls:** Can be applied over block walls, sheetrock, greenboard, hardie board, plywood or cement board @ 60 mils

**Note:** For applications over ceramic tile, quarry tile, terrazzo, plywood, and spalled concrete, use PalmaLite Novolac 185 applied at a nominal 3/16"

**b. Composition:** **PalmaLite Novolac 125** is composed of 100% solids curing agent, Novolac-epoxy resin, graded silica quartz aggregates and colored quartz aggregate. Non-toxic, low odor **PalmaLite Novolac 125** is a 100% solid system. **PalmaLite Novolac 125** meets or exceeds most VOC requirements.

**c. Finish:** Decorative, bright, variegated, easy to maintain, non-porous, slip-resistant, free of seams, trowel marks and depressions.

**d. Colors:** 12 Standard colors: Cinnabar, Denim, Graphite, Quarry, Green, Jade, Marine, Pewter, Aztec, Adobe, Onyx and Goldmist. Custom colors are available with premium charges.

**e. Limitations:** Design concrete for local conditions to prevent osmosis, hydrostatic and vapor pressure in order to eliminate the possibility of sporadic blistering or delamination. Existing slab on grade concrete surfaces may be subject to moisture vapor transmission. Maintain substrate and air temperature between 60° and 85°F with proper ventilation, permanent lighting or air conditioning during application and curing.

**f. Applicable Standards:** Military, ASTM, ACI, ANSI standards or

procedures. Detailed specification available

### PREPARATION & APPLICATION

**1. General:** New and Existing Surfaces:

- Prepare substrate in compliance with Committee C.03 ASTM C-811 Standard Practice for Surface Preparation of Concrete for Application of Resinous Monolithic Surfaces and for Application of Resinous Monolithic Surfacing and formulator's written instructions for substrate indicated.
- Surface must be structurally sound, free of contaminants and loose materials
- Clean and fill joints and cracks wider than 1/16" with PaliFlex joint filler. Tape over crack or joint with 4" fiberglass mesh.
- Sawcut or Chisel concrete substrate at termination points, "keying in" to maintain minimum thickness of floor coating.
- Tape at termination points and adjacent surfaces not to be coated with appropriate tape before each application is applied. Remove before dry
- Remove tape before each application dries. **Application: Nominal 125 Mil (1/8")**
  - Trowel Primer-Membrane- Bodycoat onto surface then broadcast silica aggregate into wet epoxy and allow to dry.
  - Remove excess aggregate.
  - Apply Cove Base or other vertical surfaces when required
  - Trowel Broadcast Coat onto surface then broadcast colored quartz aggregate to excess. Allow to dry.
  - Remove excess colored quartz aggregate. Stone and sweep floor.

**f Topcoat(s):** Standard slip-resistant finish: Apply two coats of PalmaLite Novolac..

**h. Precautions:** Provide adequate ventilation and protection against contact with skin and eyes. Wear protective gloves, goggles, respirator, and shoes. Prohibit smoking and the use of spark or flame devices at all mixing and application areas.

### AVAILABILITY AND COST

- Throughout the United States, Canada and abroad.
- Cost varies depending on size, location and preparation.

### WARRANTY

**a. Standard:** **Palma Inc.** renders a joint one-year formulator/applicator warranty against faulty workmanship or materials.

### MAINTENANCE

**a. Clean floor daily** by sweeping, mopping, (clean mop) or mechanical scrubbing with soft nylon brush as needed. Use clean water and ph neutral detergent at all times. Contact **Palma Inc.** for detailed information.

### TECHNICAL SERVICES

**a. Fax or telephone Palma Inc.** for assistance, literature, detailed specifications, preparation, application and maintenance instructions and samples.

International Testing Laboratories Inc., Newark, N.J. has completed and certified the following test results for PalmaLite Monolithic Flooring based on end use characteristics. Technical Data as follows

#### TECHNICAL DATA:

Test	Specification	ASTM C-722 Requirement	PalmaLite Result
Compressive Strength	ASTM-C579	6,000 p.s.i.	13,500 p.s.i.
Tensile Strength	ASTM-C307	1,500 p.s.i.	1,790 p.s.i.
Flexural Modules of Elasticity	ASTM-C580	0.5x10 (6)	7.03 x 10 (6)
Water Absorption	ASTM-C413	1.0% (max)	0.37% (NIL)
Thermal Coefficient of Expansion	ASTM-C531	40x10 (-6) in./in. Deg F	1.9x10 (-5) in./in. Deg F

#### SUPPLEMENTAL TESTS:

Test	Specification	Requirement	PalmaLite Result
Coefficient of Static Friction	ASTM-C1028	0.5	0.89 Average, wet or dry
Flammability	ASTM-D635	Self-extinguishing	Self-extinguishing
Thermal Shock 5 cycles	ASTM-C884	No cracking, crazing, warping.	No cracking, crazing, warping.
Indentation (concrete)	MIL -D3134	Not more than 7%	Not more than 5% Not less than 1%
Resistance to Impact (concrete)	MIL -D3134	Not more than 1/16" (62.5 Mils)	Maximum 10 Mils
Waterproofness Test	ASTM-D4068	No evidence of moisture	No evidence of moisture
Pittsburgh Toxicity Test *	RS 5-5	Non-toxic	Non-toxic
Bond Strength **	ACI -503	175 p.s.i. (100% concrete failure)	535 p.s.i. (100% concrete failure)
Coefficient of Static Friction	ANSI B101.1	0.5	Dry 1.00 Wet 0.95

#### SUPPLEMENTAL TESTS:

Test	Specification	Requirement	PalmaLite Result
Flexural Strength & Rupture	ASTM-C580	Not Cited	5,030 p.s.i.
Taber Abrasion	ASTM-D1044	Not Cited	0.05 grams loss in weight
Shore "D" Hardness	ASTM-D2240	Not Cited	83 Average
Heat Resistance, Standard Topcoat	ASTM-C884	Not Cited	140°F Continuous, 200°F Non-Continuous
Heat Resistance Novolac Topcoat	ASTM-C884	Not Cited	350°F Continuous

CHEMICALS AND SOLVENTS: For specific chemicals, solvents and high temperatures to be resisted, consult Palma Inc.

\* SGS U.S. Testing Inc., Fairfield, N.J. \*\* Law Engineering, Houston, Tx

