

# PaliKrete ColorQuartz

## Decorative Epoxy Flooring



### Decorative Epoxy Flooring

PaliKrete ColorQuartz is a 185-250 mils (3/16" - 1/4") decorative system consisting of Palma's modified urethane cement slurry base coat, followed by a colorquartz aggregate broadcast. System is then top coated with gloss or satin finish coats. Finished system results in a decorative, slip resistant, sanitary finish that will not support bacterial growth. An integral cove base can be applied when required. Colorquartz aggregates are available in standard and custom colors.

### Thermal Shock

PaliKrete ColorQuartz is ideal for areas such as heavy duty kitchens, food processing areas, water and waste treatment facilities. Specifically formulated for areas where high temperatures are frequent.

### Moisture Tolerant

PaliKrete ColorQuartz offers excellent moisture tolerance over new and existing concrete substrates. Moisture insensitivity eliminates the need for moisture testing and the use of moisture barriers.

Typically installed at 185-250 mils (3/16" - 1/4").

### PaliKrete ColorQuartz Advantages

- Low odor application
- Can be applied to 7-14 day old concrete
- High impact, thermal shock, and wear resistance
- Meets USDA requirements

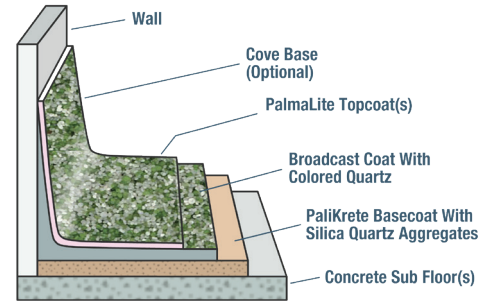
### Health and Safety

- VOC compliant, ADA compliant
- LEEDS testing available upon request
- CA 01350 compliant
- Great choice for your next Green Project

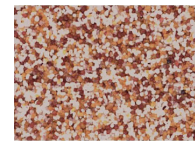
### Quality Control

As both formulator and applicator, Palma Inc. has total quality control over each application. All installers are factory trained employees of Palma Inc.

### Floor Components



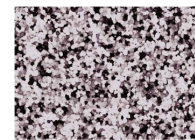
### Standard Blends



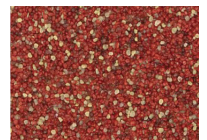
Cinnabar



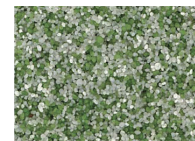
Denim



Graphite



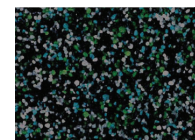
Quarry



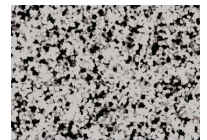
Green



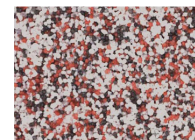
Jade



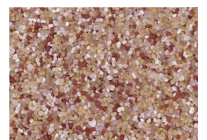
Marine



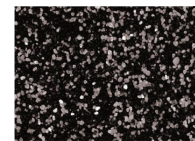
Pewter



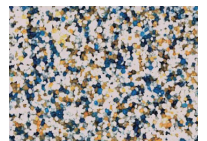
Aztec



Adobe



Onyx



Goldmist

This color chart is a guide only. Final selection should be made from an actual sample

# PaliKrete ColorQuartz

## Decorative Epoxy Flooring

### PRODUCT NAME

**PalmaLite PaliKrete ColorQuartz 185-250 mils Seamless Urethane Color Quartz Flooring**

### FORMULATOR

**Palma Inc.**  
**628 NJ-10**  
**Suites 2 and 3**  
**Whippany, NJ 07981**  
**Phone: 800.336.7256 | Fax: 973.429.2149**  
**Website: www.palmainc.com**

### PRODUCT DESCRIPTION

**a. Basic Uses:** PalmaLite PaliKrete Quartz is a combination urethane modified cement colorquartz flooring system applied at a nominal 185-250 mils (3/16" - 1/4"). Applied over properly prepared new or existing concrete. Outwearing concrete by 3 to 1, it is ideally used in commercial, industrial, and institutional facilities for light to heavy traffic. The special properties of PaliKrete ColorQuartz make it a natural choice for areas where aggressive atmospheres exist. This includes environments where temperatures exceed 160 degrees F, and/or where moisture issues exist in new or existing concrete substrates. PaliKrete ColorQuartz resists abrasion, physical impact, inorganic acids, alkalies, fungi, and bacteria. Its dense, non-porous consistency provides exceptional waterproofing, low shrinkage and adhesive strength.

**Cove Base:** Feather-edged at specified height.

**Wainscoting/Walls:** Applied over new or prepared surfaces at 60 Mils (1/16").

**b. Composition:** PaliKrete ColorQuartz is composed of urethane modified cement, 100% solids epoxies (1 part hardener, 2 parts resin), graded silica aggregates, and color quartz granules.

PaliKrete ColorQuartz meets or exceeds most VOC requirements.

**c. Finish:** Decorative, bright, variegated, easy to maintain, non porous, slip resistant, and free of seams.

**d. Colors:** Cinnabar, Denim, Graphite, Quarry, Green, Jade, Marine, Pewter, Aztec, Adobe, Onyx, Gold Mist. Custom colors are available with premium charges.

**e. Limitations:** Maintain substrate and air temperatures between 65 and 85 degrees F. Relative humidity below 85%. Proper ventilation and permanent lighting required.

**f. Applicable Standards:** Military, ASTM, USDA, FDA.

### PREPARATION & APPLICATION

**General:** New and Existing Surfaces:

**a.** Prepare substrate in compliance with Committee C.03 ASTM C-811 Standard Practice for Surface Preparation of Concrete for Application of Resinous Monolithic Surfacing, and formulator's written instructions for surface preparation.

**b.** Surface must be structurally sound, free of contaminants and loose materials.

**c.** Sawcut concrete substrate at termination points, keying in to maintain minimum thickness of floor coating.

**d.** Tape at termination points and adjacent surfaces not to be

coated.

**Application: PaliKrete Quartz 185-250**

**a.** Trowel urethane modified cement coat, back roll with loop roller, then broadcast silica aggregate into wet coating. Allow to dry.

**b.** Remove excess aggregate.

**c.** Trowel epoxy bodycoat onto surface, then broadcast silica aggregate into wet epoxy. Allow to dry.

**d.** Remove excess aggregate.

**e.** Apply cove base to vertical surfaces when required.

**f.** Trowel epoxy broadcast coat onto surface, then broadcast color quartz into wet epoxy. Allow to dry.

**g.** Remove excess color quartz aggregate.

**h.** Stone floor surface, then remove residue from stoning.

**i.** Topcoat(s): 2 clear epoxy topcoats are standard. Please consult Palma Inc. for various topcoat options to meet project requirements.

**j.** Precautions: Provide adequate ventilation and protection against contact with skin and eyes. Wear protective gloves, goggles, respirator, and shoes. Prohibit smoking and the use of spark or flame devices at all mixing and application areas.

### AVAILABILITY AND COST

**a.** Throughout the United States, Canada and abroad.

**b.** Cost varies depending on size, location and preparation.

### WARRANTY

**a.** Standard: Palma Inc. renders a joint one-year formulator/applier warranty against faulty workmanship or materials.

### MAINTENANCE

**a.** Clean floor daily by sweeping, mopping, (clean mop) or mechanical scrubbing with soft nylon brush as needed. Use clean water and ph neutral detergent at all times. Contact Palma Inc. for detailed information.

### TECHNICAL SERVICES

**a.** Fax or telephone Palma Inc. for assistance, literature, detailed specifications, preparation, application and maintenance instructions and samples.

International Testing Laboratories Inc., Newark, N.J. has completed and certified the following test results for PalmaLite Monolithic Flooring based on end use characteristics. Technical Data as follows

#### TECHNICAL DATA:

Test	Specification	ASTM C-722 Requirement	PalmaLite Result
Compressive Strength	ASTM-C579	6,000 p.s.i.	8,400 p.s.i.
Tensile Strength	ASTM-C307	1,500 p.s.i.	1,500 p.s.i.
Flexural Modules of Elasticity	ASTM-C580	0.5x10 (6)	2,700 p.s.i.
Water Absorption	ASTM-C413	1.0% (max)	0.37% (NIL)
Thermal Coefficient of Expansion	ASTM-C531	40x10 (-6) in./in. Deg F.	1.9x10 (-5) in./in. Deg F

#### SUPPLEMENTAL TESTS:

Test	Specification	Requirement	PalmaLite Result
Coefficient of Static Friction	ASTM-C1028	0.5	0.89 Average, wet or dry
Flammability	ASTM-D635	Self-extinguishing	Self-extinguishing
Thermal Shock 5 cycles	ASTM-C884	No cracking, crazing, warping.	No cracking, crazing, warping.
Indentation (concrete)	MIL -D3134	Not more than 7%	Not more than 5% Not less than 1%
Resistance to Impact (concrete)	MIL -D3134	Not more than 1/16" (62.5 Mils)	160 in lbs
Waterproofness Test	ASTM-D4068	No evidence of moisture	No evidence of moisture
Pittsburgh Toxicity Test *	RS 5-5	Non-toxic	Non-toxic
Bond Strength **	ACI -503	175 p.s.i. (100% concrete failure)	535 p.s.i. (100% concrete failure)

#### SUPPLEMENTAL TESTS:

Test	Specification	Requirement	PalmaLite Result
Flexural Strength & Rupture	ASTM-C580	Not Cited	5,030 p.s.i.
Taber Abrasion	ASTM-D1044	Not Cited	0.05 grams loss in weight
Shore "D" Hardness	ASTM-D2240	Not Cited	83 Average
Heat Resistance, Standard Topcoat	ASTM-C884	Not Cited	140°F Continuous, 200°F Non-Continuous
Heat Resistance Novolac Topcoat	ASTM-C884	Not Cited	350°F Continuous

CHEMICALS AND SOLVENTS: For specific chemicals, solvents and high temperatures to be resisted, consult Palma Inc.

\* SGS U.S. Testing Inc., Fairfield, N.J. \*\* Law Engineering, Houston, Tx

